

FEATURES:-

- Displays Flowrate, Resettable Total and also Non Resettable Grand Total.
- LCD has large digits and easy to read from distance.
- Easy reset total button on front panel.
- Power options: Internal Lithium battery with up to 10 year life span or Externally powered 240 VAC or 5 - 25 VDC models.
- High and Low set points, pulse and 4-20mA outputs options are available.
- IP65 wall mountable enclosure with flip up lid to protect LCD from weather.
- User friendly and fully programmable functionality.
- Maximum ambient Temperature 55 °C.
- Made in Australia by ManuFlo.



The **FRT303** Flowrate Totalizer is designed to operate with a wide range of pulse/signal output or coil output flowmeters, providing an instantaneous flowrate reading with a resettable Total display and Grand Total display. To toggle the display between the Total and the Grand Total, simply touch the front panel button once. To reset the Total, touch the front panel button twice.

Power is via either: an internal Lithium battery which has a typical life of up to 10 years; optional external 5-25 VDC; or optional external 240 vac. The **FRT303** will accept flowmeter input pulses from as low as 0.2 and up to 2000 Hz (Note: for steady flowrate calculations, need at least 2 Hz input). A filter factor is programmable, to smooth the flowrate reading for pulsating flows.

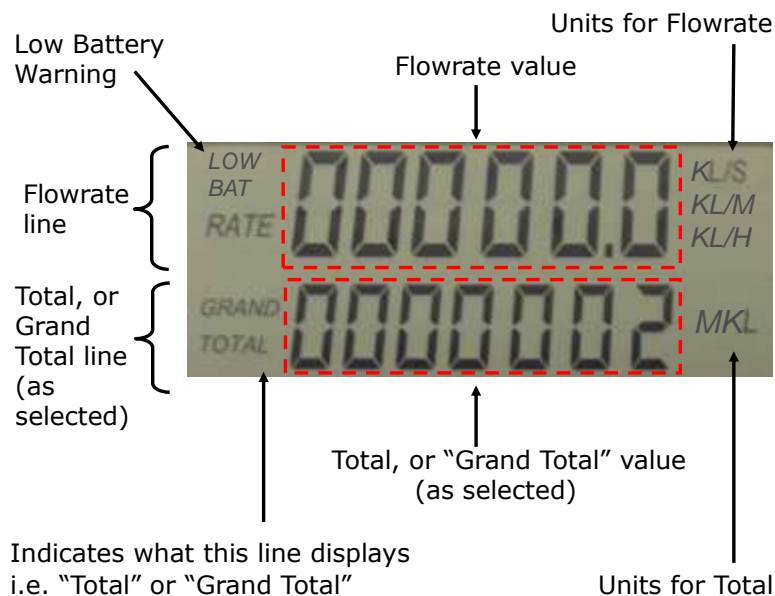
The **FRT303** has other fully programmable optional features including pulse output, 4-20mA output, and Hi-Low flow setpoint outputs. All functions are entered via internal keypads and a menu display.

The LCD of the **FRT303** can be programmed to indicate flowrate and totals in a number of different engineering units. Prior to shipping by default all application parameters are pre-programmed according to customer requirements, including display unit preferences and the flowmeter K-factor (your preferences must be advised at time of order placement).

The **FRT303** is provided in a compact IP65 Polycarbonate enclosure with molded mounts, allowing it to be used in a wide range of field applications.

ELEMENTS OF THE LCD DISPLAY

FRT303



SPECIFICATIONS

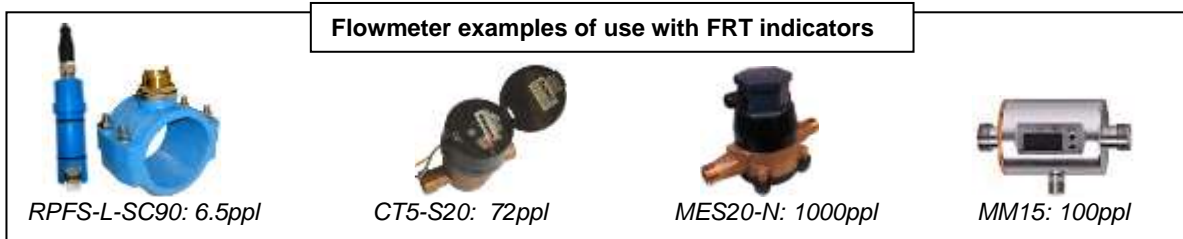
FRT303

Display Type	LCD , dual line
Display Readout Flowrate	6 digits (17mm x 7mm) up to 3 decimal places, in Litres/second , Litres/minute, Kilolitres/minute, Kilolitres/second or Kilolitres/hour. (with filter setting)
Display Readout Reset Total	up to 7 digits (13mm x 6mm), up to 3 decimal places, in Litres, Kilolitres or Megalitres.
Display Readout Grand Total	7 digits (13mm x 6mm) up to 3 decimal places, in Litres, Kilolitres or Megalitres
Programming	Via 4 internal push buttons
Power Supply Options	<u>Option 1</u> : - 3.6v ½AA replaceable lithium battery (for Coil / Reed pulse flowmeters -no pwr.). <u>Option 2</u> : - 5 -25 VDC (usually power flowmeter by same input voltage supply, max.100mA). <u>Option 3</u> : - 240 VAC (Provides a +12VDC auxiliary output to power a flowmeter, max.100mA). <i>NOTE: All 3 options with 3.6v lithium battery backup.</i>
Display Housing Ingress	IP66 waterproof, Sealed Polycarb. enclosure with flip lid & 4 x 316S/S screws.
Max. Ambient Temperature	-20 to +60 °C max.
Pulse input (compatibility)	NPN 5-25vdc, Voltage free switching or optional coil sensor configured input. 0.2 to 2,000 Hz (note: minimum 2Hz is required for stable flow rate readings).
Pulse Output	Open collector 5-25VDC. 5ms fixed pulse width,100Hz max. (sink pls for -B-P bat.pwr option)
Current Output	4 - 20 mA.
High/Low Flowrate Setpoints	Open collector 5-25 VDC contact output.
Enclosure Dimensions:	95mm (H) x 120mm (W) x 60mm (D) Fastening lugs with 123mm centers apart
Electrical connection	1,or 2 or 3 IP67 -PG7 cable gland entries (depends on model) , plug-in screw terminals
Weight (unpacked)	0.4 kg

ORDERING INFORMATION

FRT303

Order Code	Power Option	Input to FRT from Flowmeter			Outputs				
		Coil	Reed Switch or Open Collector	Pulse/NAMUR	Pulse Output (isolated)	Pulse Output (non-isolated)	High/Low Flowrate indication	4-20mA current output (isolated)	4-20mA current output drive
FRT303-B	Battery	Y	Y						
FRT303-B-P	Battery	Y	Y			Y			
FRT303-D	DC External power	Y	Y	Y					
FRT303-D-P	DC External power	Y	Y	Y	Y				
FRT303-D-E	DC External power	Y	Y	Y	Y		Y		Y
FRT303-A-P	AC External power	Y	Y	Y	Y				
FRT303-A-E	AC External power	Y	Y	Y	Y		Y		Y



Footnote: FRT303-A (AC powered version) cannot be used with 12-24vdc Magnetic Flowmeters, instead procure separate 240-24vdc power adaptor from ManuFlo and or use with FRT303-D (24vDC powered version).

* Refer Separate Instruction manual for detailed Specs, Programming and wiring of FRT303.